

New Intersection Designs Coming to Ashland

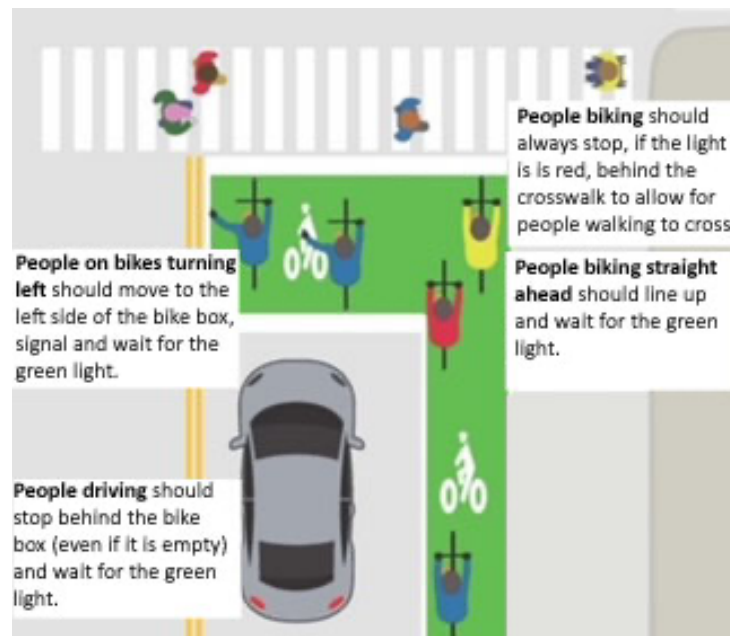
- Bike Boxes -

E. Main at Mountain & Walker at Ashland St.

Ashland residents should look for upcoming changes to two well-traveled intersections. A new, safer traffic design is coming to East Main at Mountain, and Ashland Street at Walker. These projects will improve pedestrian, bicyclist and driver safety. As Scott Fleury, Ashland Public Works Director, said “the changes reflect the community’s desire to rethink how we view safety on our roads, and these solutions provide the paradigm shift that the public wants and the City Council has directed.”

Additionally, these projects support the City’s transportation-infrastructure goal to provide a safe, well-maintained, effective, and efficient multimodal transportation system at a reasonable cost.

You’ll soon see green “bike boxes,” which will be markings painted near street intersections. The associated road signs and markings help make clear—for bicyclists, pedestrians, and motorists— how to use a bike box. Fleury noted “it is really pretty simple.”



- **If you are driving**, and arrive at a red light, stop and wait behind the bike box. Right-turns are prohibited on red. Once the light turns green, wait for people using the bike box in front of you to clear the intersection before you proceed.

- **If you are riding a bicycle** in the bike lane and arrive at a red light, enter the bike box (behind the crosswalk). If you are traveling through the intersection, position yourself in the center of the right-hand travel lane. Right-hand turns on red by bicyclists, after stopping, are permitted. When the light turns green proceed through the intersection merging into the bike lane in your chosen direction of travel.
- Motorists and people riding bicycles **must** yield to pedestrians crossing the road.

Bike boxes, according to Portland State University Professor Jennifer Dell, are perceived by both motorists and people riding bicycles to make intersections safer. "In particular, 42% of motorists who are not cyclists felt driving through the intersection was safer with the bike boxes (compared to 14% who felt it was more dangerous). Moreover, 77% of bicyclists felt bicycling through the intersections was safer with the bike boxes (compared to 2% who felt it was more dangerous)." ([source](#))

Improvements at the intersection at Ashland Street and Walker are expected to occur in May, 2024 while the E. Main and Mountain intersection improvements aren't expected until the fall of 2024.

A short video describing the use of bike boxes for people riding bicycles is available at <https://express.adobe.com/video/ZkZT4S8KM1gha>.